



IP CAMERA - MOTION DETECTION SETUP

Contents:

Motion Detection Setup and Record....1

MOTION DETECTION SETUP AND RECORD

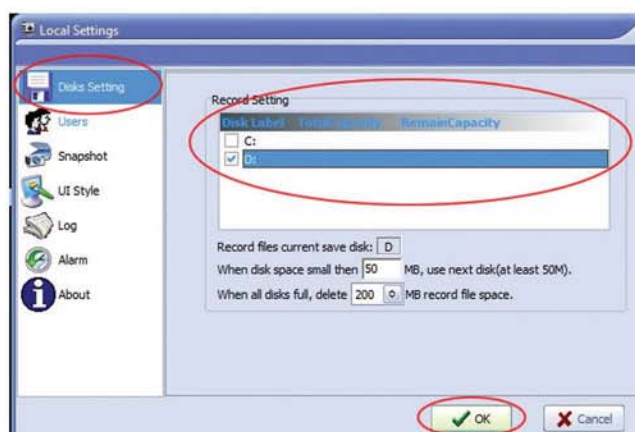
Make sure you have installed and are running the software  IPCameraClientEng on the CD.

- Stage 1 - Set storage location
- Stage 2 - Set motion detection area
- Stage 3 - Set to record on motion detection

STAGE 1 - SET STORAGE LOCATION

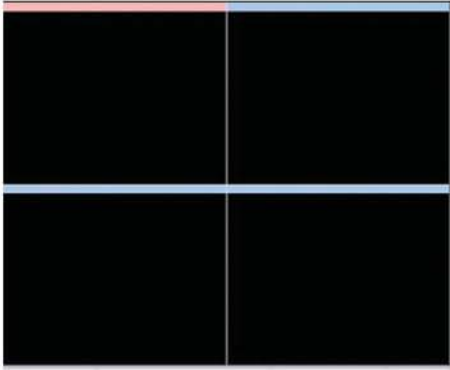


Click "Settings"
Click "Local Setting"

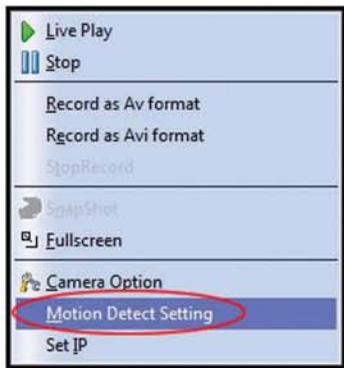


Select "Disk Setting"
Select a drive to save recordings to
Click "OK"
Your saved files will be located in a folder called IPCamRec on your selected drive

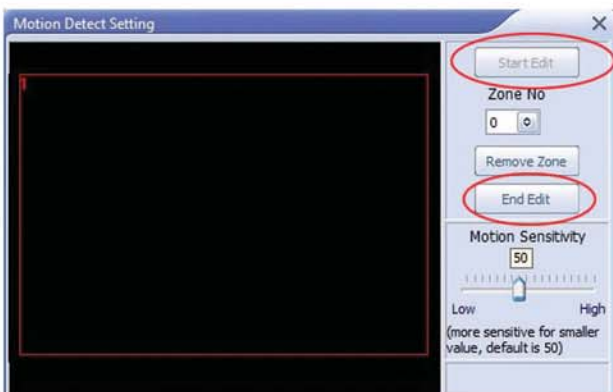
STAGE 2 – SET MOTION DETECTION AREA



Right click in the view window of the channel you are setting motion detection on.



Click on “Motion Detect Setting”



Click “Start Edit”

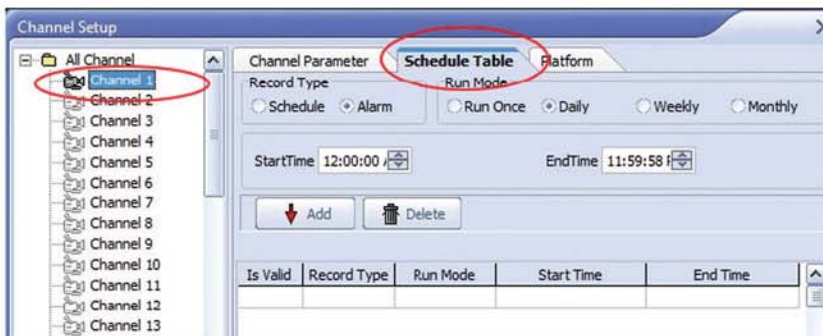
Drag an area in the main window (holding the left button of the mouse down)

Click “End Edit”

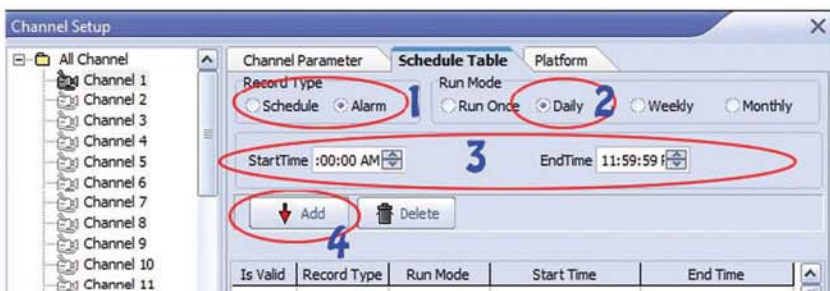
STAGE 3 – SET TO RECORD ON MOTION DETECTION



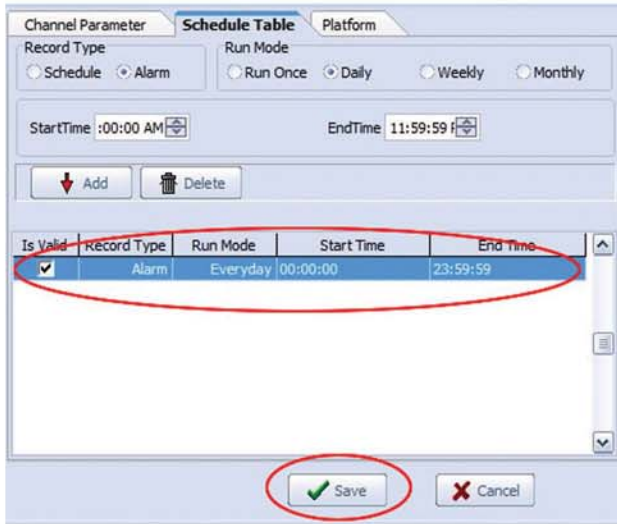
Click "Settings"
Click "Channel Setup"



Select "Schedule Table" tab
Select the channel you are setting up Motion Detection on



- 1 - Select "Alarm"
- 2 - Select "Daily"
- 3 - Set "Start Time" 12:00:00 AM - "End Time" 11:59:59pm or times of your choice
- 4 - Click "Add"



Click "Save"



When you are ready to start your recording, click "Play"